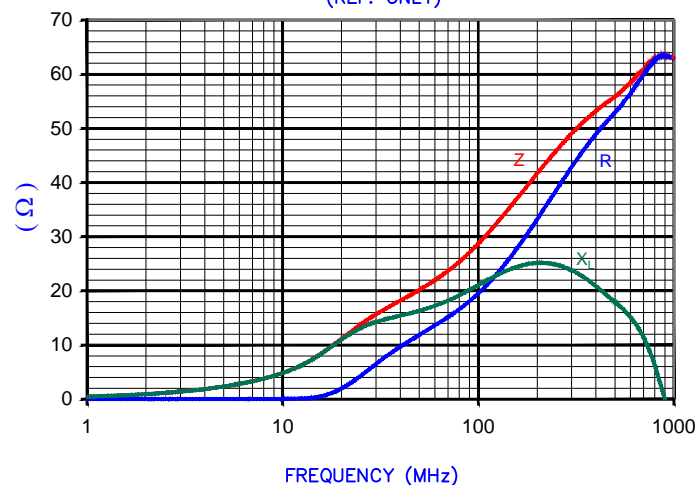


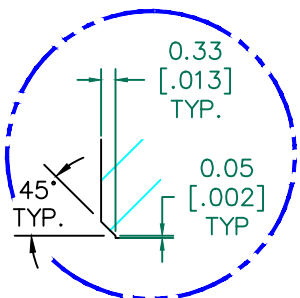
UNCONTROLLED DOCUMENT

NET IMPEDANCE (Z)			
Frequency	300 MHz	500 MHz	1 GHz
Nominal (REF)	50 Ω	56 Ω	61 Ω
Minimum	- Ω	45 Ω	- Ω

NET Z,R AND X vs. FREQUENCY (REF. ONLY)



AGILENT E4991A Impedance/Material Analyzer
HP 16092A-Test Fixture



DETAIL "A"
CHAMFER
SCALE=6:1

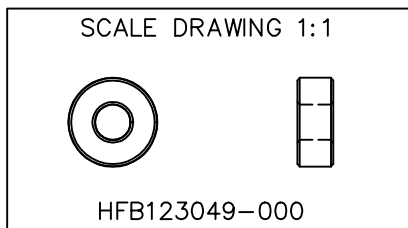
FERRITE CORE DIMENSIONS (SPEC) MM [Inches]:

A	12.32 [.485]	+	0.25 [.010]
B	4.88 [.192]	+	0.15 [.006]
C	5.00 [.197]	+	0.10 [.004]

WEIGHT/1000 2.45 kgs [5.40 Lbs]

NOTES: UNLESS OTHERWISE SPECIFIED

1. COSMETIC SPECIFICATION REFER TO WI-QA-038.



DIMENSIONS ARE IN mm [INCHES].				This print is the property of Laird Tech. and is loaned in confidence subject to return upon request and with the understanding that no copies shall be made without the written consent of Laird Tech. All rights to design or invention are reserved.		Laird	
				PROJECT/PART NUMBER:	REV	PART TYPE:	DRAWN BY:
C	UPDATE THE LOGO	05/13/15	QU	HFB123049-000	C	FERRITE CORE	TMB
B	UPDATE FORMAT CHG CURVE & Z SPECS	04/04/03	TMB	DATE:	SCALE:	MATERIAL:	
A	ORIGINAL DRAFT	08/19/02	TMB	06/14/00	4 : 1	FERRITE	
REV	DESCRIPTION	DATE	INT	CAD #	TOOL #		
				HF123049-000-C	B0485		